

Culture and Communities Select Committee

18 JANUARY 2018

STEPHANIE ROGERS, PROGRAMME MANAGER

Country Park Transformation

**“Once in a generation opportunity to
create a suite of modern
21st Century parks that are
operationally self financing”**

Outcomes

Financially self sustaining

Improved play,
activities, facilities
and learning

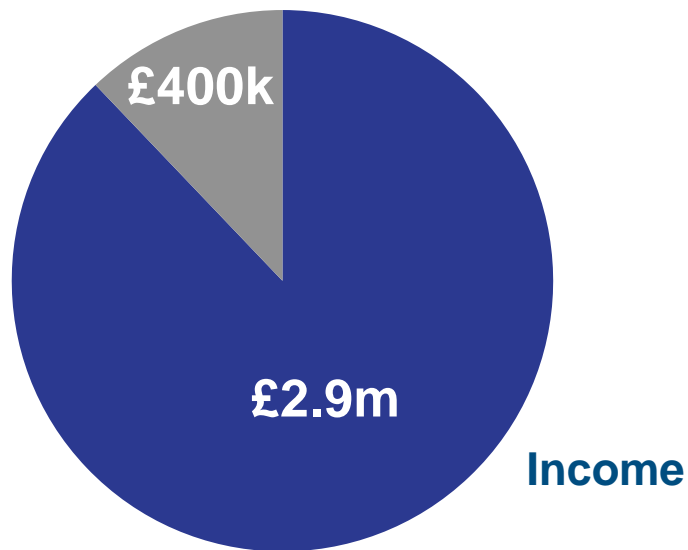
Increased visitor
numbers,
satisfaction and
spend

Improved partner/
community
relationships

Business Case

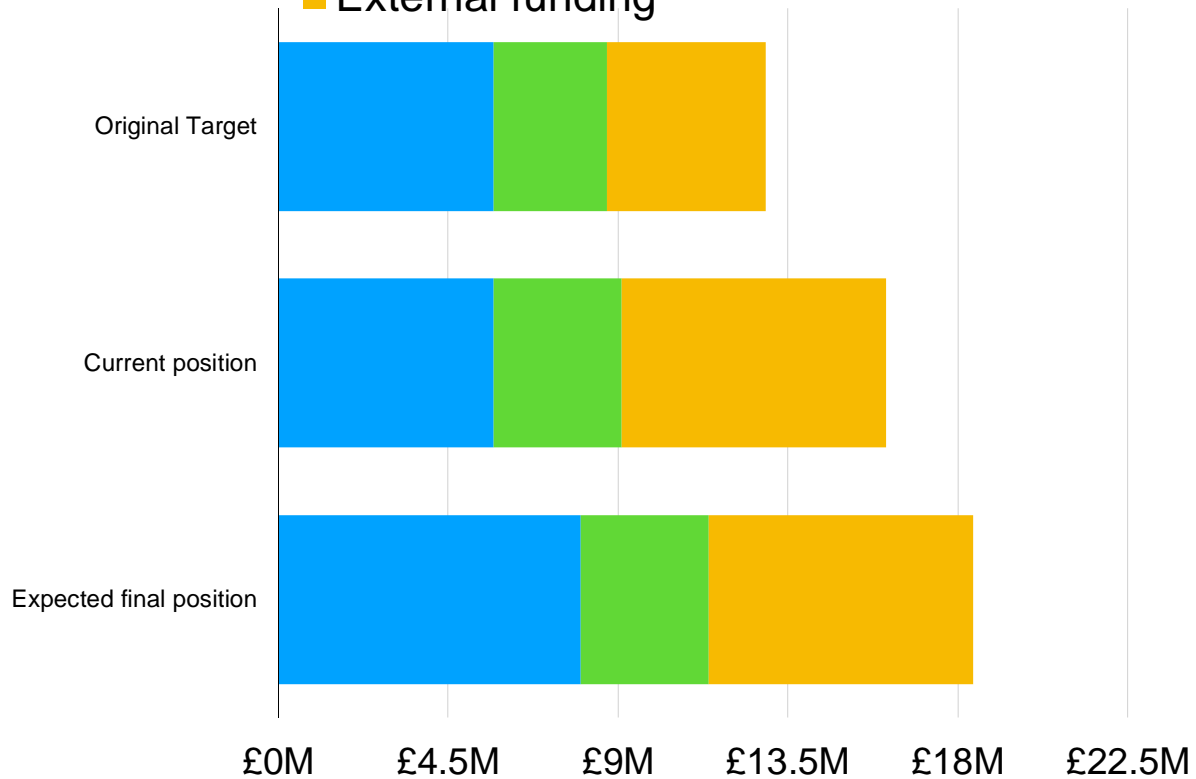
Invest to generate income and meet our current cost to HCC

Cash Limit



£3.3m turnover

- HCC
- Service capital receipt
- External funding



What People Told Us

**Adventure
& Natural
Play**

**Trails &
Paths**

**Signage &
Information**

**Improved
Catering**

**More
Events**

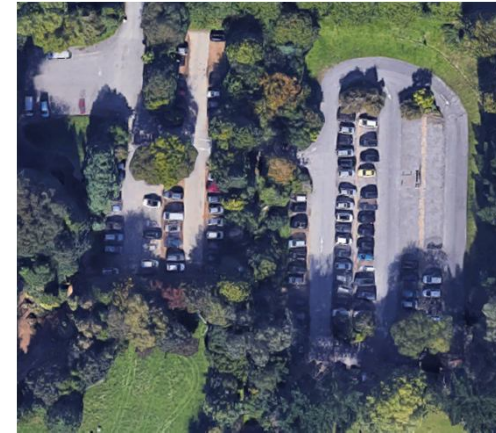
Improving our Offer



Play



Commercial Activities



Car Parking



Catering

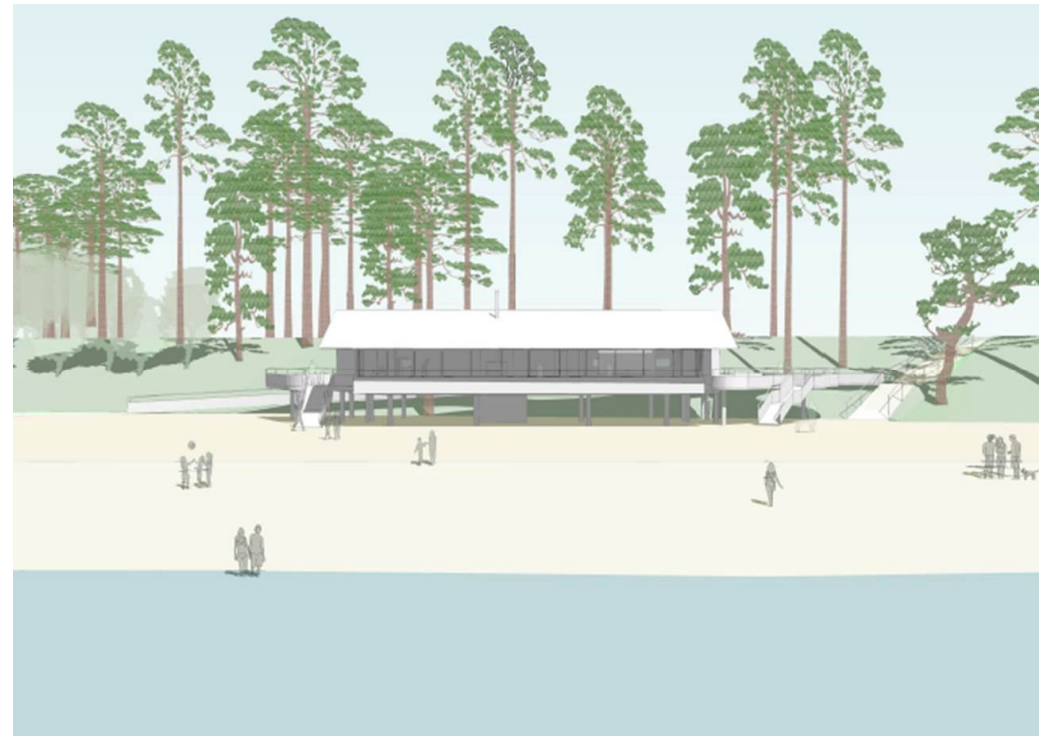


Information & interpretation



**HAMPSHIRE
COUNTRYSIDE
SERVICE**

Marketing/Digital



£2.9m Scheme. £850k funding EM3 LEP

- New visitor centre including cafe, toilets, reception, offices
- New outdoor play opportunities and trails
- Sensory garden - built by Friends - complete
- On schedule to complete Spring 2018

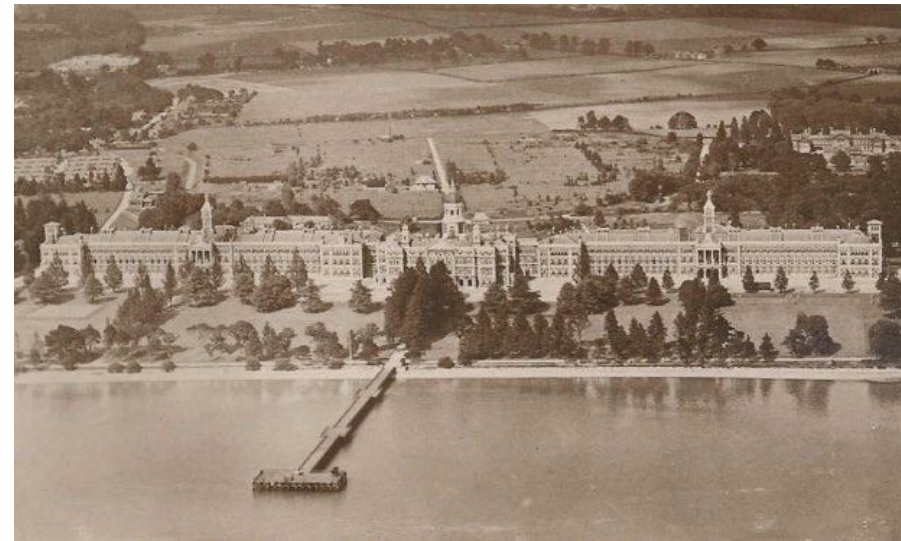


Follow on Twitter [@LepeCountryPark](https://twitter.com/LepeCountryPark) #LoveLepe



£3.5m Scheme £2m funded from Heritage Lottery Fund

- Chapel project on schedule to complete
- Spring 2018
- New play completed
- Further funding required to improve the cafe and Empire Room

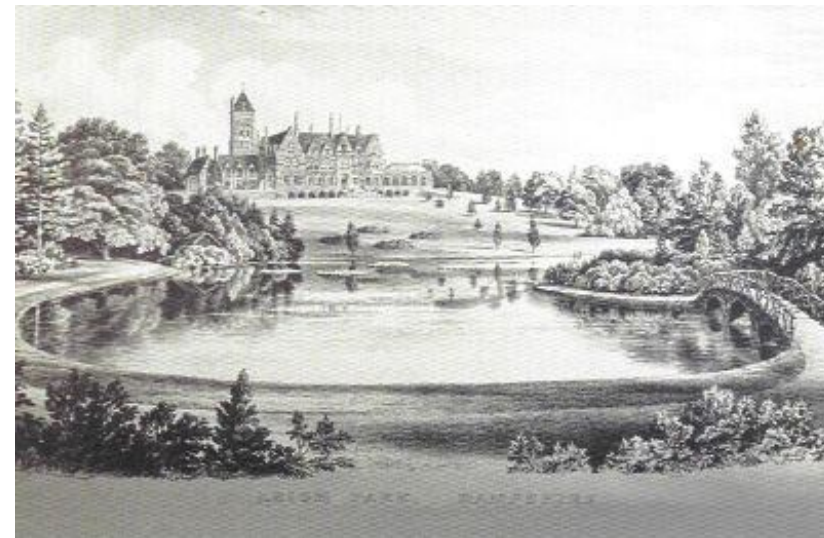


Follow on Twitter @RoyalVictoriaCP



£4m Scheme. £2.85m funded by HLF

- New cafe in the Coach House
- Restoration of historic landscape features
- New facilities to support community enterprise
- New car park
- Completion Spring 2019

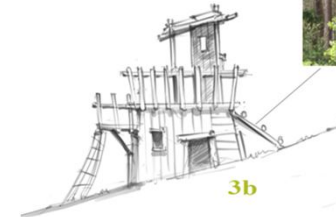


Follow on
Twitter
[@Staunton
country](https://twitter.com/Stauntoncountry)



£1.95m Scheme Including £163k funding by Armed Forces Covenant Fund

- Visitor centre reconfigured to improve cafe, shop and offices
- New play and fitness for families & dogs
- Improved trails and facilities for cycling
- Other works due to complete early 2019



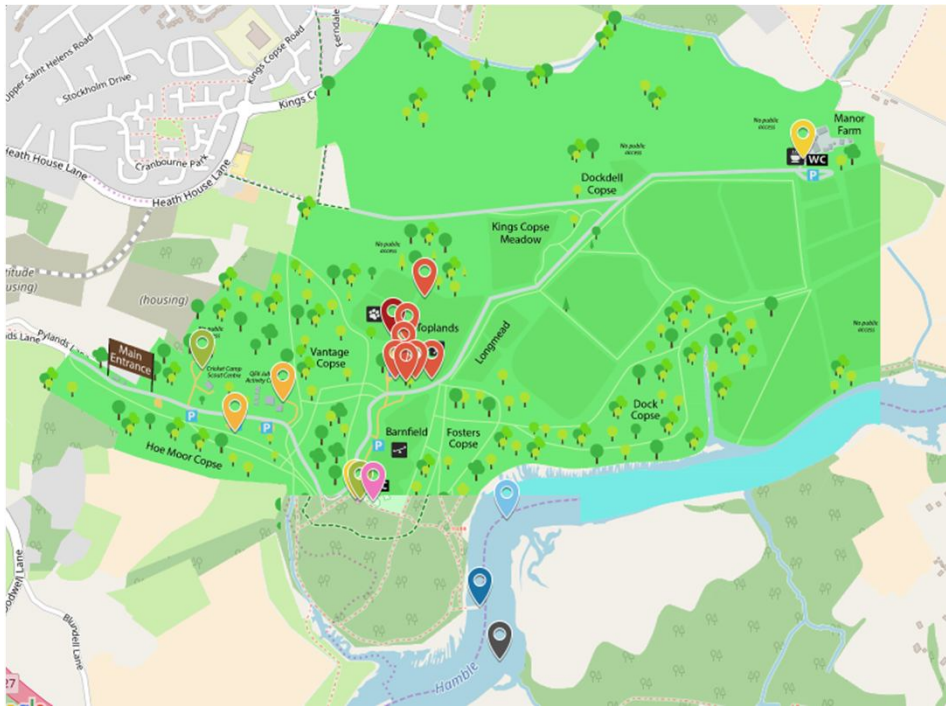
Follow on Twitter @QECP





£850k Scheme

- Create a focal point in the Park
- Improved catering offer with outdoor seating
- Better play and trails
- Hub for other commercial activities
- Feb 2019



Follow on Twitter
[@ManorFarmCP](https://twitter.com/ManorFarmCP)

Farm Attractions - Manor Farm & Staunton



Funding required - £1m

- Increasing health & safety requirements
- Need for improved facilities for animal welfare
- Both cafes require further investment
- Improved activities



Titchfield Haven



National Nature Reserve

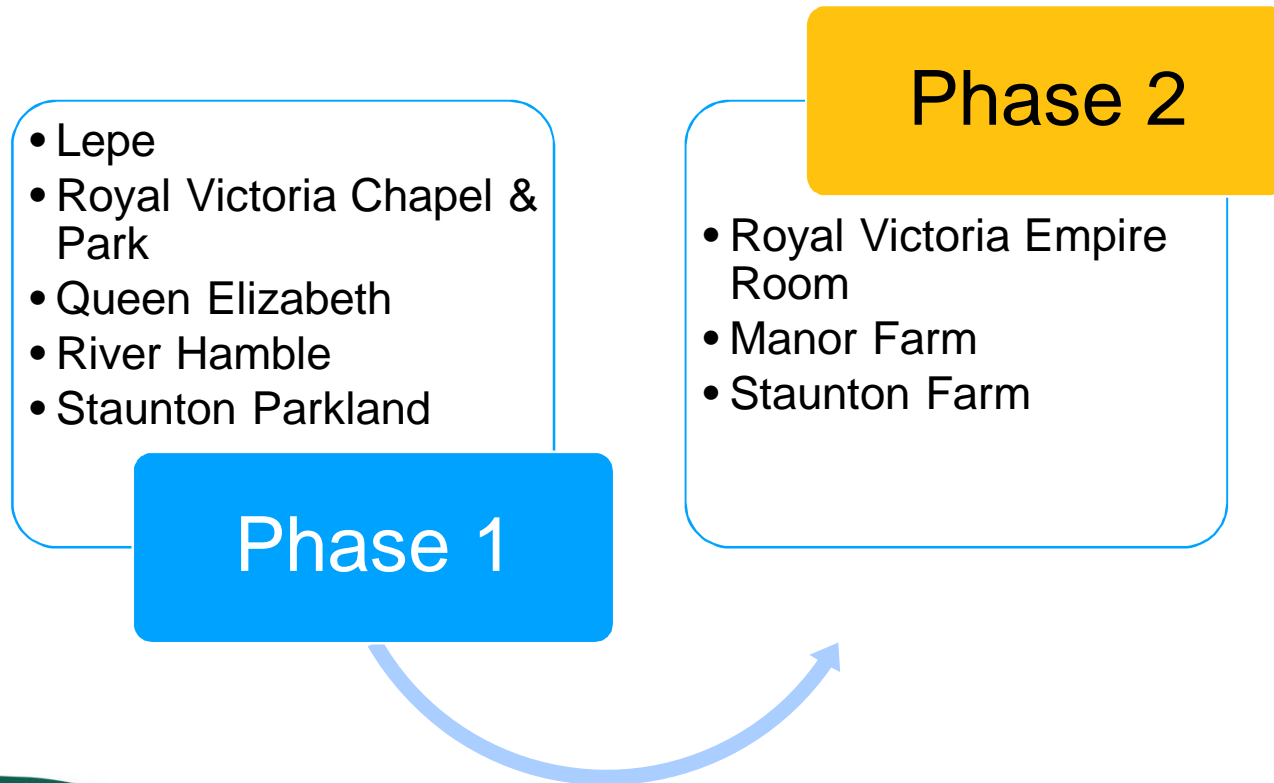
- Working with Hampshire and IOW Wildlife Trust
 - Agree scope of the project and funding
 - Report from WWT to assist in the future management requirements
- Minor refurbishment to public areas



Follow on Twitter @Titchfieldhaven



Programme Phasing



Thank you
Any Questions?